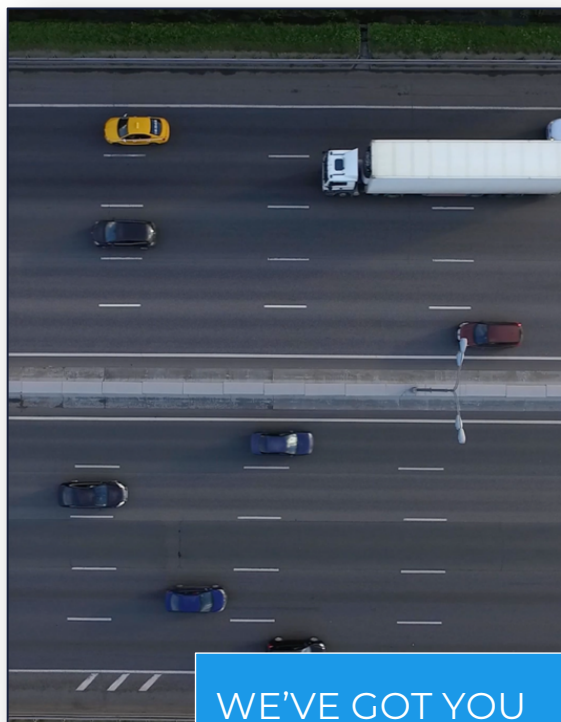




When you need more than just GPS live tracking for your fleet of commercial on-road vehicles, we have a comprehensive range of products available.



WE'VE GOT YOU  
COVERED FROM  
COAST TO COAST

From simple, self-installed units to more sophisticated wired in equipment. Even the ability to track individual drivers' hours and performance separately to the vehicle itself.

By providing core measurements and safety metrics, insurance optimisation and maintenance management is now easy.

#### Standard features include:

- Real time, super accurate data stream
- Intelligent sensors that access the vehicle's CANBus system\*
- Multi-channel GPS signals for high accuracy positioning
- Powerful accelerometer to measure braking, acceleration and cornering forces
- Back up memory when out of 4G network coverage
- Over The Air (OTA) upgradeable firmware
- Adjustable polling frequency: 1/second to 1/day
- Geofencing
- Audible alerts for speed and fatigue management
- Crash and Incident reporting
- Harsh braking, cornering & acceleration monitoring

#### We also offer the following features to make administration more streamlined:

- ATO Certified FBT Logbook
- Standard suite of reporting, including detailed historic trip reporting
- Vehicle pool scheduling

#### Premium Options

Fleet Trakka is easily upgradable to feature the following options:

- Driver ID tags
- Seat Belt Monitoring
- 4WD Engagement
- Maintenance reminders
- Pre-start check sheets
- Iridium Satellite for use when out of 4G coverage range

\*Where available

For more information, or to arrange a demonstration, please email [sales@euclidic.com](mailto:sales@euclidic.com)

Euclidic Systems  
Chifley Tower  
Level 12, 2 Chifley Square  
Sydney NSW 2000

Euclidic Systems NZ  
Level 26, PwC Tower  
188 Quay Street  
Auckland 1010

[www.euclidic.com](http://www.euclidic.com)

euclidic